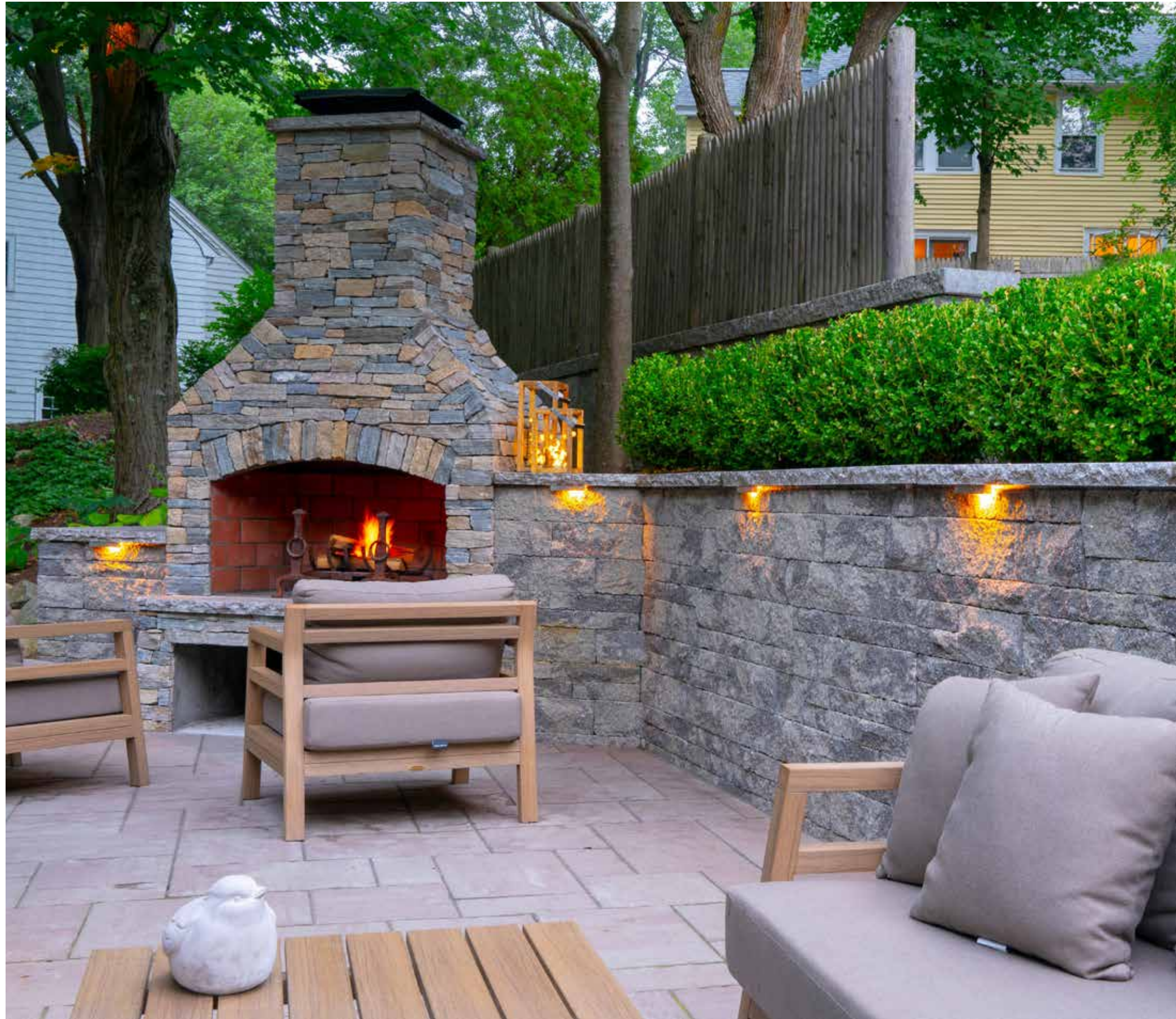




America's
original
hardscape
light





about us

Don't Be Left in the Dark	3
Built for Your Installation	5
Our Materials	7
LED Performance	7
Powder Coating	8
Safety	8
Personalized Service	9
We Stand Behind Our Products	10
Technical Details	37

our products

Pavelux® LED Paver Inserts	14
IL6000 Adjustable LED Hardscape Fixture	16
Stainless Outdoor LED Kitchen Fixtures	18
IL4 LED Hardscape Fixture	20
IL6 LED Hardscape Fixture	22
IL600 LED Hardscape Fixture	24
IL6 Original Hardscape Fixture	26
IL18 Lamped Hardscape Fixture	27
IL18 LED Hardscape Fixture	28
PL24 Lamped Path Lighting Fixture	29
PL24 LED Path Lighting Fixture	30
DL Deck and Rail Fixtures	32
Accessories	35
Fixture Comparison	38

customize your lighting

Metals and Finishes	36
LED Color Outputs	36

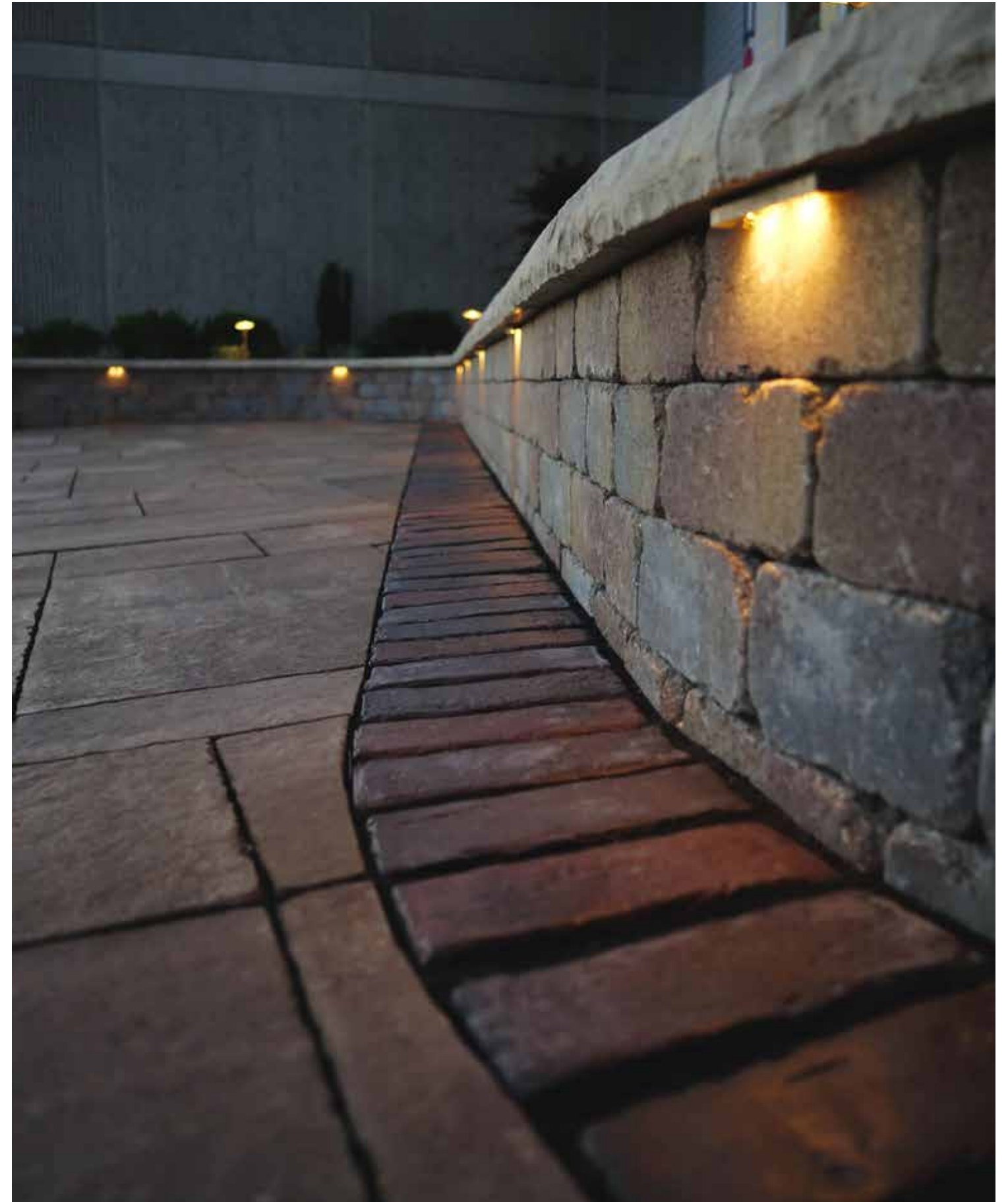
we believe
no hardscape should be
left in the dark

Our lighting is built to perform while you cook, relax, swim and play in your outdoor living space.

When you're making lighting fixtures for outdoor enthusiasts, material choice is just one part of the design process. All of the small details matter... from comfortable color outputs, to customizable finish options, to simplicity of installation, to responsible product life cycle.

Day and night, our fixtures are thoughtfully created to be an element in your design. Virtually invisible by day, fixtures fit discreetly into walls and under caps. By night, they accent your project and lengthen the usability of your space.

Integral Lighting is proudly designed, manufactured, shipped and supported in Pennsylvania.



built precisely for each installation

For over a decade, Integral Lighting has crafted American-made fixtures with purpose and integrity. To this day, our commitment to designing superior products remains unchanged.



Acknowledging the uniqueness of every lighting installation, we manufacture various in-stock and custom fixture options...

fixtures

14 models, each designed with a specific purpose.

led color outputs

4 popular options to meet your lighting goals.

in-stock finishes

4 solid metals, 13 durable powder coated finishes and 6 textured finishes to blend with your hardscape.

custom finishes

90 made-to-order RAL finishes are available in shades of brown, gray and green.



materials of lasting quality

Every millimeter of our fixtures is designed to last. Enhancing the life cycle of our fixtures is our responsibility to you and the planet. We utilize quality, noncorrosive materials, such as copper, brass, stainless steel and heavy-duty aluminum to create products built to last.

optimized led performance

Made with renewable materials, our overmolding process provides the LED with superior protection from the harshest outdoor environments. All overmolded LEDs are IP68 certified.

premium powder coated finishes

Combining the right powders, surface preparation and professional application results in an enduring powder coated finish. Our eight-step pretreatment process ensures maximum adhesion for the finest product. Our powder coating process is PCI 3000 certified.

safety you should expect

Integral Lighting fixtures are UL certified in the USA and Canada. Our facility and product are inspected quarterly to ensure that you are supplied with consistency according to UL 1838 Low Voltage Landscape Lighting Systems.



we stand behind our products

At Integral Lighting, we believe in our products. If your Integral Lighting or Pavelux® fixture has any defect as a result of the materials or workmanship, we will make it right.

Within 30 days of your purchase, return the product to your distributor and they will repair or replace it.

Within 5 years of your purchase, return the product directly to us and we will repair or replace it.

If, after 10 years of use, you experience an issue, return the product to us and we will repair it. You just pay for the parts.

personalized service is our passion

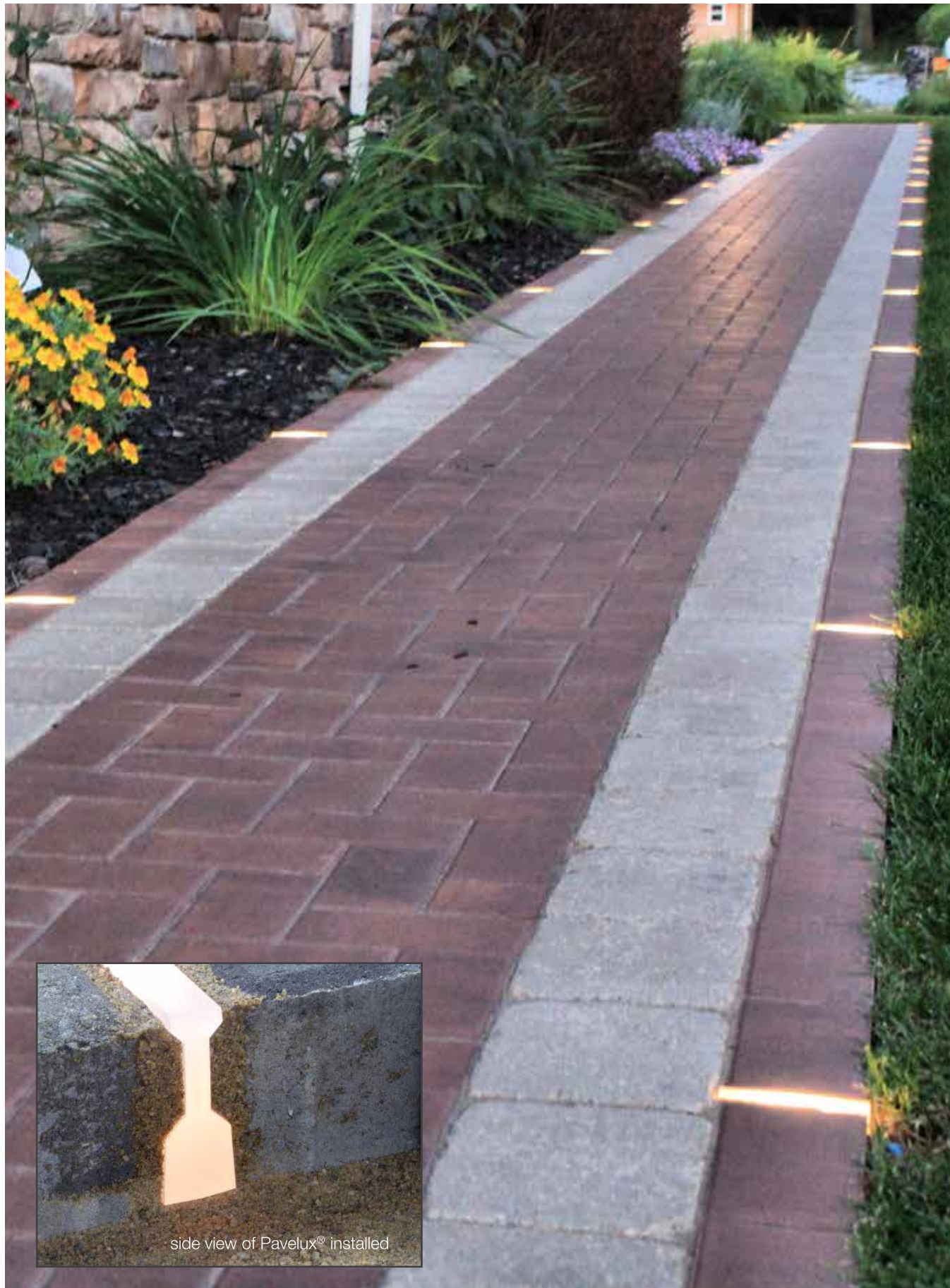
It all began with a simple fixture design and continues with exceptional service.

We manufacture lighting for the modern world, but we deliver good, old-fashioned customer service. From personally answering our phones during business hours, to helping with lighting designs and layouts, to troubleshooting and solving field-related concerns, we cover it all.

We have a genuine interest in your goals and a sincere appreciation that you choose to do business with us.







pavelux®

led paver inserts

Our Pavelux® LED paver lighting inserts quickly and discreetly into your hardscape accent border. Our intentionally simple design provides subtle, unobtrusive lighting to your pathways, patios, driveways, gardens and more. Each fixture is strong and solid, molded from UV resistant polycarbonate and requires no cutting or drilling for installation. Create a perfect entry to your home with choices of three standard lengths and two LED color outputs.



IPx.100.xxx



IP4.100.500
IP6.100.500
IP8.100.500

4" L x .75" W x 2" H
6" L x .75" W x 2" H
8" L x .75" W x 2" H

1 watt energy consumption
2 watt energy consumption
2 watt energy consumption

3000K pure white
3000K pure white
3000K pure white



IP4.100.550
IP6.100.550
IP8.100.550

4" L x .75" W x 2" H
6" L x .75" W x 2" H
8" L x .75" W x 2" H

.25 watt energy consumption
.5 watt energy consumption
.5 watt energy consumption

2400K ultrawarm white
2400K ultrawarm white
2400K ultrawarm white

specs:

Molded from UV resistant polycarbonate for durability as strong as your stone surface. • Integrated strain relief. • Low voltage 12v AC operation. • Compatible with either magnetic or electronic 12v AC transformers. • Completely encapsulated LED circuitry for superior protection from outdoor environments.

features:

Simply insert fixture between pavers in hardscape accent border. • No cutting or drilling required. • Perfect for use with all segmental hardscapes, brick, bluestone and more.

certifications:





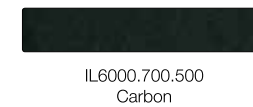
IL6000

adjustable led hardscape fixture

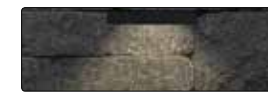
Regain control of your lighting system with our newest IL6000 fixture. Designed and built with an adjustable bracket, the LED can pivot up to 45 degrees to direct light and remove hot spots from your wall. Each fixture is supplied with our new Thinsert®, an ultra-thin stainless steel sleeve that slips over the insert plate to allow for easy extraction and reinsertion after installation.



IL6000.xxx.500



led color outputs:



2700K warm white
add suffix .200 to model number



3000K pure white
order as listed above



4200K cool white
add suffix .400 to model number

specs:

Dimensions: 6" W x .75" H x 3" D. • Unibody construction from stainless steel 20g alloy 304. • 2 watt LED energy consumption. • Output similar to 10 watts. • Low voltage 12v AC operation. • Compatible with either magnetic or electronic 12v AC transformers. • Overmolded LED circuitry for superior protection from outdoor environments.

features:

Unique stainless steel LED bracket adjusts up to 45° to direct light towards, or away from, the hardscape wall. • Every fixture supplied with complimentary Thinsert® sleeve for ease of future fixture maintenance.

certifications:





stainless steel

outdoor led kitchen fixtures

Today's outdoor kitchens are planned with as much detail as their indoor counterparts, with lighting being a key component. Our premium stainless steel fixtures are designed to seamlessly match outdoor kitchens, grills and cabinetry. The overmolded LED packages are attached with no visible fasteners to allow placement versatility... easily install under a capstone or anywhere within the wall. Available in four lengths and three LED color outputs to match the desired look and feel of your cooking area.



IL6xx.150.500



IL600.150.500
Brushed Stainless Steel
6" W x .5" H x 3" D
2 watt energy consumption
Output similar to 10 watts



IL612.150.500
Brushed Stainless Steel
12" W x .5" H x 3" D
2 watt energy consumption
Output similar to 10 watts



IL618.150.500
Brushed Stainless Steel
18" W x .5" H x 3" D
4 watt energy consumption
Output similar to 20 watts



IL624.150.500
Brushed Stainless Steel
24" W x .5" H x 3" D
6 watt energy consumption
Output similar to 30 watts

led color outputs:



2700K warm white
add suffix .200 to model number



3000K pure white
order as listed above



4200K cool white
add suffix .400 to model number

specs:

- Unibody construction from stainless steel 20g alloy 304.
- Blind fastening of LEDs for seamless installation anywhere within the wall.
- No capstone required to hide fixture.
- Low voltage 12v AC operation.
- Compatible with either magnetic or electronic 12v AC transformers.
- Overmolded LED circuitry for superior protection from outdoor environments.

certifications:





IL4

led hardscape fixture

Our IL4 LED is the best way to illuminate tight spaces or create a subtle ambiance in your outdoor living area. Create visual “scenes” by accenting unique aspects of your property and increase the usability and security of your space after dark. This fixture is available in your choice of 19 durable finishes and three interchangeable LED color outputs.



IL4.xxx.500

IL4.105.500 Solid Copper	IL4.125.500 Solid Brass	IL4.125A.500 Solid Antique Brass	IL4.150.500 Brushed Stainless Steel	IL4.200.500 Black	IL4.225.500 Bronze	IL4.250.500 Clay
IL4.275.500 Putty	IL4.300.500 Brick Red	IL4.325.500 White	IL4.350.500 Bone	IL4.375.500 Sand	IL4.400.500 Mud	IL4.425.500 Terracotta
IL4.450.500 Pebble	IL4.475.500 Stone	IL4.500.500 Slate	IL4.780.500 Light Concrete	IL4.790.500 Dark Concrete		

led color outputs:



2700K warm white
add suffix .200 to model number

3000K pure white
order as listed above

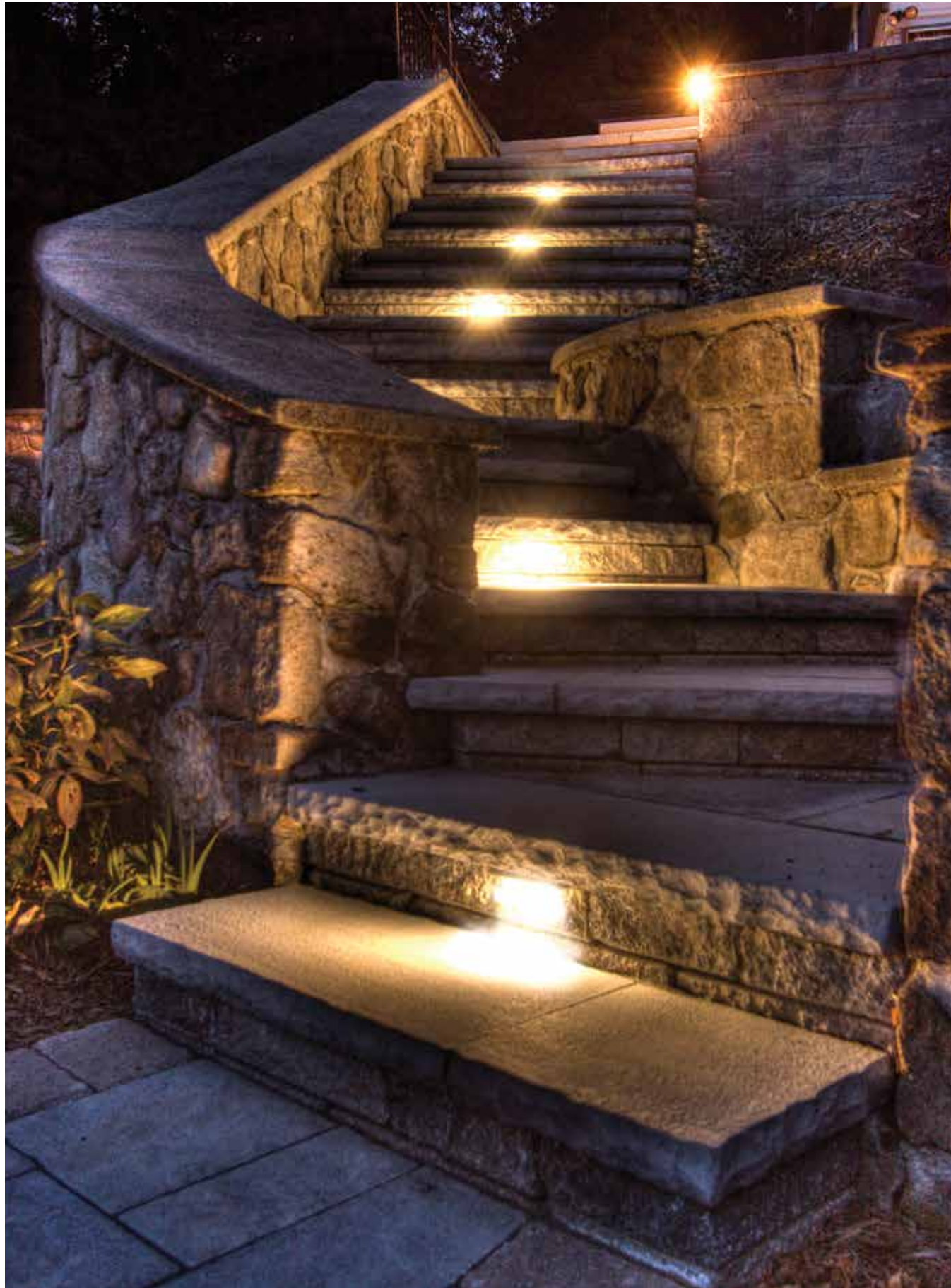
4200K cool white
add suffix .400 to model number

specs:

Dimensions: 4" W x .5" H x 3" D. • Self leveling insert is stainless steel 18g alloy 304. • Field replaceable faceplate. • 1 watt LED energy consumption. • Output similar to 5 watts. • Low voltage 12v AC operation. • Compatible with either magnetic or electronic 12v AC transformers. • Overmolded LED circuitry for superior protection from outdoor environments.

certifications:





IL6

led hardscape fixture

Allow your hardscape walls and columns to come to life in the evening hours. Our IL6 LED fixture is our most popular, with the perfect combination of slim profile, energy efficiency and generous LED output. All of our raw materials are strong, durable and noncorrosive to ensure they last the lifetime of your hardscape. This fixture is customizable with 19 professional finishes and three LED color outputs.



IL6.xxx.500

 IL6.105.500 Solid Copper	 IL6.125.500 Solid Brass	 IL6.125A.500 Solid Antique Brass	 IL6.150.500 Brushed Stainless Steel	 IL6.200.500 Black	 IL6.225.500 Bronze	 IL6.250.500 Clay
 IL6.275.500 Putty	 IL6.300.500 Brick Red	 IL6.325.500 White	 IL6.350.500 Bone	 IL6.375.500 Sand	 IL6.400.500 Mud	 IL6.425.500 Terracotta
 IL6.450.500 Pebble	 IL6.475.500 Stone	 IL6.500.500 Slate	 IL6.780.500 Light Concrete	 IL6.790.500 Dark Concrete		

led color outputs:



2700K warm white
add suffix .200 to model number



3000K pure white
order as listed above



4200K cool white
add suffix .400 to model number

specs:

Dimensions: 6" W x .5" H x 3" D. • Self leveling insert is stainless steel 18g alloy 304. • Field replaceable faceplate. • 2 watt LED energy consumption. • Output similar to 10 watts. • Low voltage 12v AC operation. • Compatible with either magnetic or electronic 12v AC transformers. • Overmolded LED circuitry for superior protection from outdoor environments.

certifications:





IL600

led hardscape fixture

Our IL600 LED fixture is the lighting solution for easy retrofits and hardscape remodeling. It is simply the most versatile fixture on the hardscape lighting market. An overhanging block or cap is not required to hide this fixture, so it can easily be installed anywhere within the wall. If you have an existing hardscape and want to add light, look no further. Stocked in six textured finishes and four LED color outputs.



IL600.xxx.xxx



led color outputs:

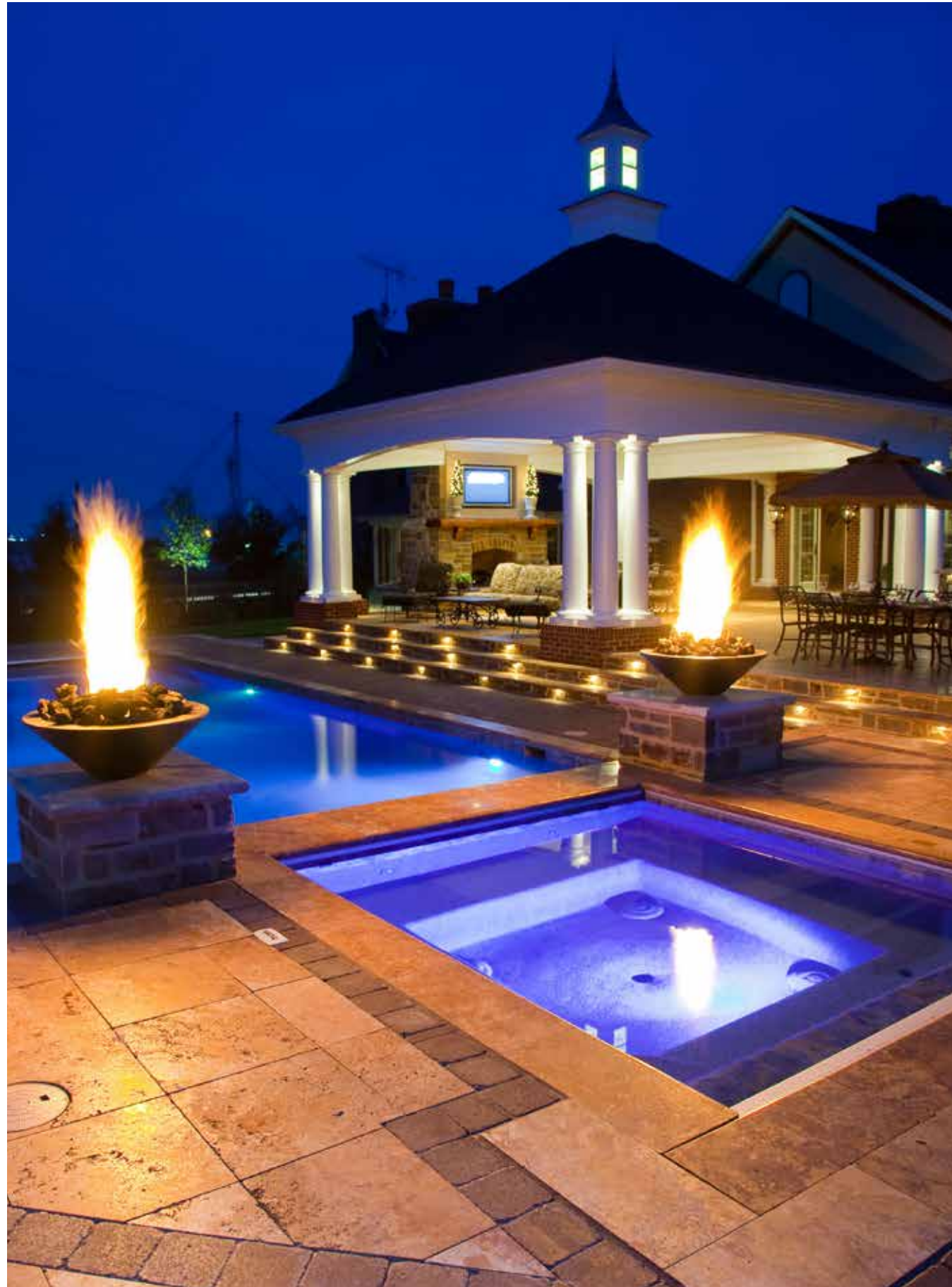


specs:

Dimensions: 6" W x .5" H x 3" D. • Unibody construction from stainless steel 20g alloy 304. • Blind fastening of LEDs for seamless installation anywhere within the wall. • No capstone required to hide fixture. • Low voltage 12v AC operation. • Compatible with either magnetic or electronic 12v AC transformers. • Overmolded LED circuitry for superior protection from outdoor environments.

certifications:





IL6

the original insert-able wall fixture

Our IL6 is the original fixture that started the hardscape lighting revolution over a decade ago. The inventive design allows your hardscape to come to life at night, while simultaneously enhancing your home's beauty, safety and value. This fixture is installed in thousands of hardscape projects across the USA and Canada. Choose from a replaceable LED lamp in 2700K warm white or a Long Life Xenon bulb.



IL6.xxx

IL6.105 Solid Copper	IL6.125 Solid Brass	IL6.125A Solid Antique Brass	IL6.150 Brushed Stainless Steel	IL6.200 Black	IL6.225 Bronze	IL6.250 Clay
IL6.275 Putty	IL6.300 Brick Red	IL6.325 White	IL6.350 Bone	IL6.375 Sand	IL6.400 Mud	IL6.425 Terracotta
IL6.450 Pebble	IL6.475 Stone	IL6.500 Slate	IL6.780 Light Concrete	IL6.790 Dark Concrete		

lamp options:



LED Lamp
1 watt energy consumption
Output similar to 10 watts
2700K warm white
add suffix .185 to model number



Long Life Xenon Bulb
11.5 watts
order as listed above

specs:

Dimensions: 6" W x .875" H x 3" D. • Self leveling insert is stainless steel 18g alloy 304. • Field replaceable faceplate. • Choice of LED lamp or Xenon bulb supplied with fixture. • Low voltage 12v AC operation. • Nylon socket with brass contacts.

certifications:



IL18

lamped hardscape fixture

Our IL18 fixtures are perfect for lighting outdoor spaces, ideally for wide hardscape columns or steps. Offering the greatest in quality and ease-of-installation, this fixture will boost your home's exterior features, reduce dimly lit areas and add value to your property. The lamped IL18 fixture is available with your choice of two replaceable LED lamps in 2700K warm white or two Long Life Xenon bulbs.



IL18.xxx



lamp options:



LED Lamps
2 watt energy consumption
Output similar to 20 watts
2700K warm white
add suffix .185 to model number



Long Life Xenon Bulbs
23 watts
order as listed above

specs:

Dimensions: 18" W x .5" H x 3" D. • Self leveling insert is stainless steel 18g alloy 304. • Field replaceable faceplate. • Choice of two LED lamps or two Xenon bulbs supplied with fixture. • Low voltage 12v AC operation. • Nylon socket with brass contacts.

certifications:



IL18

led hardscape fixture

Our IL18 fixtures are perfect for lighting outdoor spaces, ideally for wide hardscape columns or steps. Offering the greatest in quality and ease-of-installation, this fixture will boost your home's exterior features, reduce dimly lit areas and add value to your property. The IL18 with an overmolded LED is available in your choice of three popular color outputs.



IL18.xxx.500



led color outputs:



2700K warm white
add suffix .200 to model number



3000K pure white
order as listed above



4200K cool white
add suffix .400 to model number

specs:

Dimensions: 18" W x .5" H x 3" D. • Self leveling insert is stainless steel 18g alloy 304. • Field replaceable faceplate. • 4 watt LED energy consumption. • Output similar to 20 watts. • Low voltage 12v AC operation. • Compatible with either magnetic or electronic 12v AC transformers. • Overmolded LED circuitry for superior protection from outdoor environments.

certifications:



PL24

lamped path lighting fixture

Lighting offers a beacon of welcome along outdoor pathways and walkways. Compliment your landscape project with our contemporary paver accent light. Creating a well-lit path to and around your home adds safety, convenience and curb appeal all in one step. Our simple and sleek fixture profile is designed to integrate with all outdoor living designs. A heavy-duty stainless steel mounting stake is included with every fixture. The lamped PL24 fixture is supplied with a Long Life 18 watt Xenon bulb.

PL24.xxx



lamp:



Long Life Xenon Bulb
18 watts
order as listed above

specs:

Dimensions: 24" H x 6" W. • Stainless steel reflector and heavy-duty tubing. • Stainless steel spade stake included. • Low voltage 12v AC operation. • Long Life 18 watt Xenon bulb supplied with fixture. • Nylon socket with brass contacts. • Compatible with magnetic 12v AC transformers.

certifications:



PL24

led path lighting fixture

Lighting offers a beacon of welcome along outdoor pathways and walkways. Compliment your landscape project with our contemporary paver accent light. Creating a well-lit path to and around your home adds safety, convenience and curb appeal all in one step. Our simple and sleek fixture profile is designed to integrate with all outdoor living designs. A heavy-duty stainless steel mounting stake is included with every fixture. The PL24 with an overmolded LED is available in your choice of three color outputs.

PL24.xxx.500



led color outputs:



2700K warm white
add suffix .200 to model number



3000K pure white
order as listed above



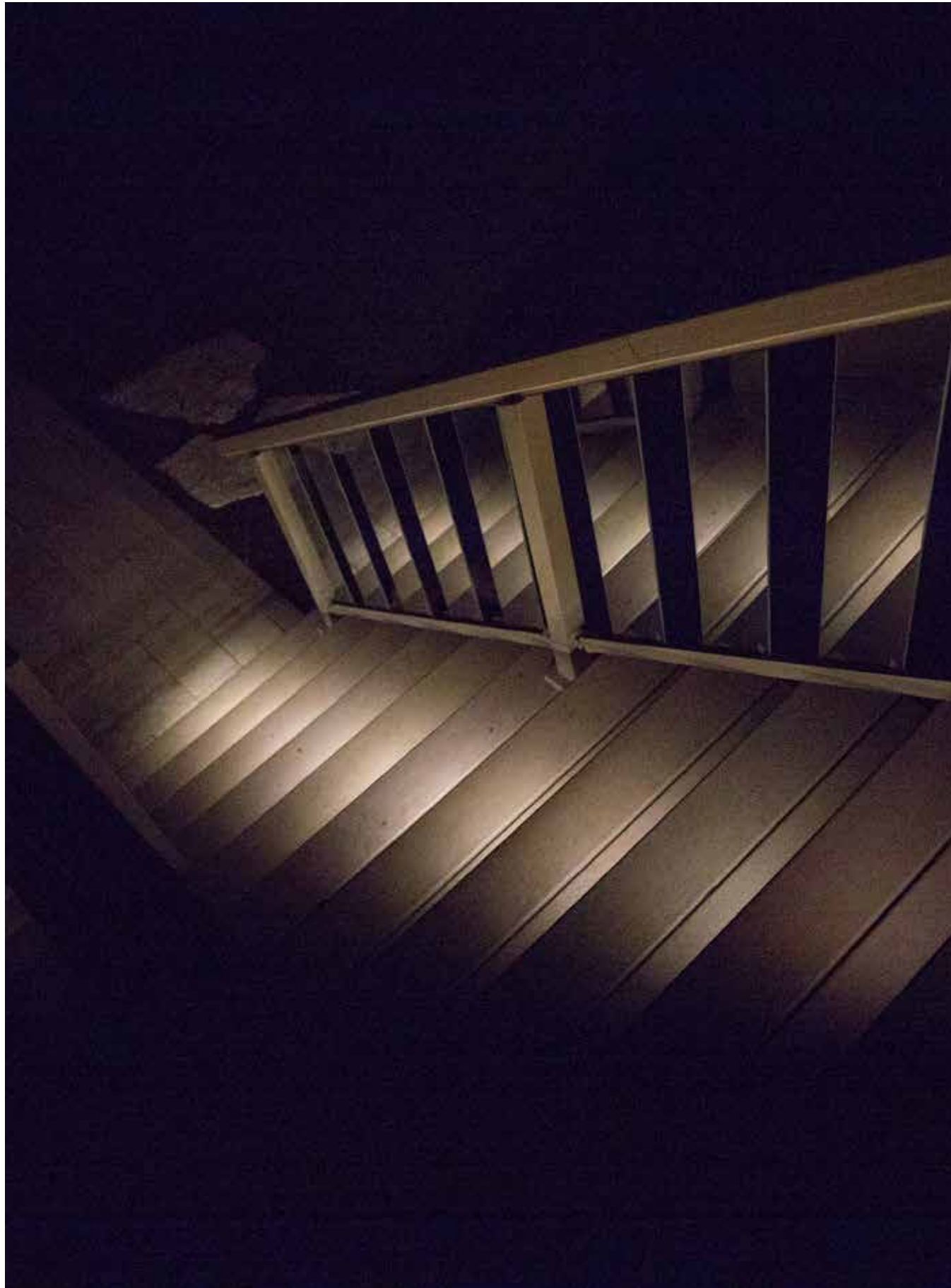
4200K cool white
add suffix .400 to model number

specs:

Dimensions: 24" H x 6" W. • Stainless steel reflector and heavy-duty tubing. • Stainless steel spade stake included. • 3 watt LED energy consumption. • Output similar to 15 watts. • Low voltage 12v AC operation. • Compatible with either magnetic or electronic 12v AC transformers. • Overmolded LED circuitry for superior protection from outdoor environments.

certifications:





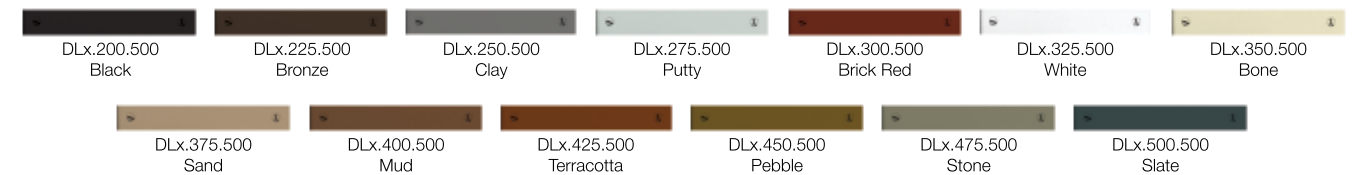
DL

led deck and rail fixtures

Our deck lighting fixtures are designed specifically for traditional or modern railings, steps and decks. Our fixtures are compact, concealed and coordinate seamlessly with any decking materials and colors. Each fixture is equipped with a 1 watt overmolded LED package, which is available in three color outputs.



DLx.xxx.500



led color outputs:



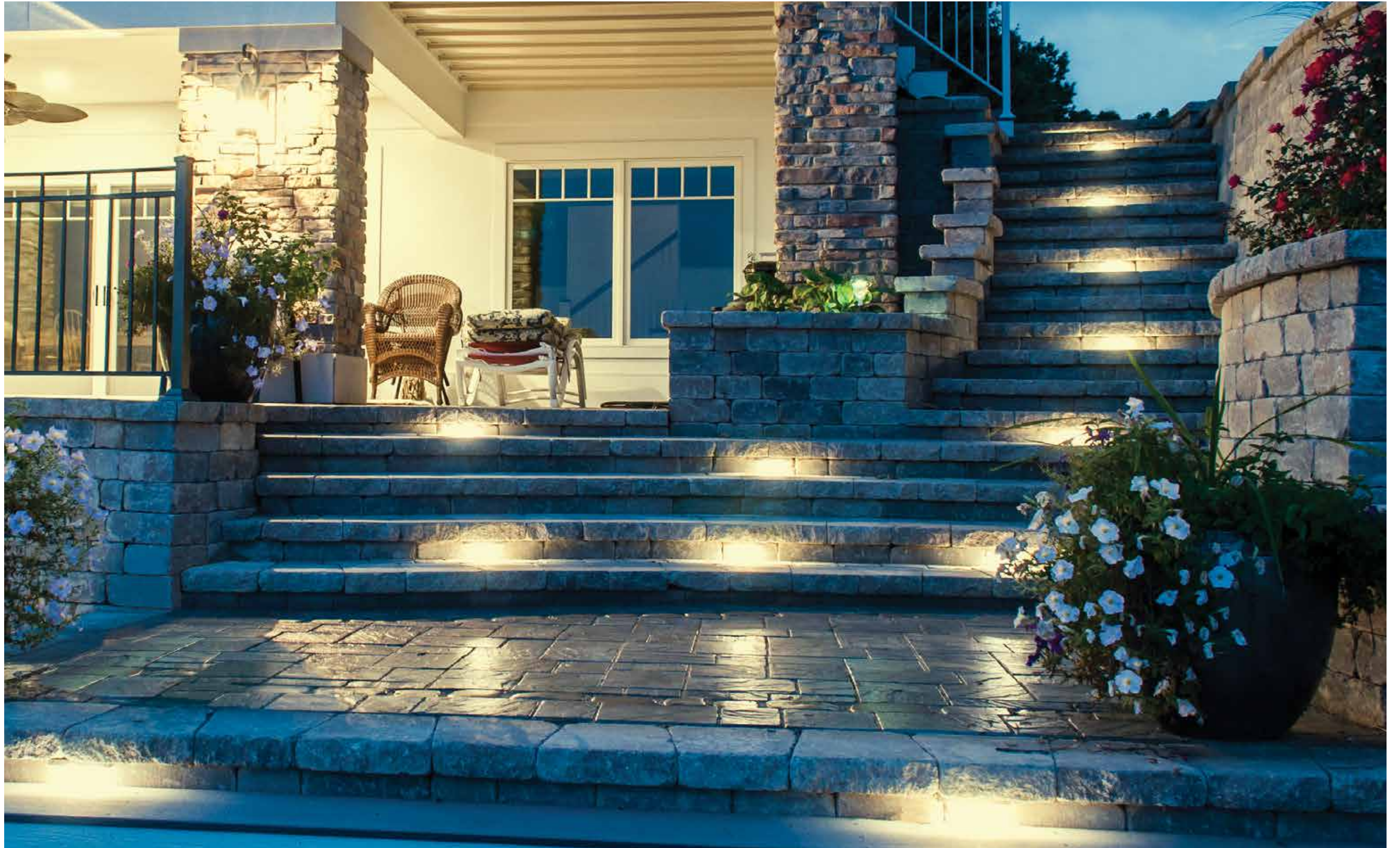
1 watt LED energy consumption. • Output similar to 5 watts. • Overmolded LED circuitry. • Low voltage 12v AC operation. • Compatible with either magnetic or electronic 12v AC transformers.

specs:

- DL3.100.500 Dimensions: .9375" W x .5" H x 6" L. • Designed to be used in between balusters without a shroud. • 15/16" width fits baluster spacings 2 - 4". • Fixture held in place during rail assembly. • No fasteners necessary for mounting.
- DL3.xxx.500 Dimensions: 3" W x .5" H x 1" D. • Install with color-coordinated shroud when unable to mount in rail cavity.
- DL4.xxx.500 Dimensions: 4" W x .5" H x 1.75" D. • Perfect for illuminating deck steps and risers. • Field replaceable faceplate and self-leveling insert.

certifications:





accessories

thinsert®



Our Thinsert® is an ultra-thin stainless steel sleeve that slips over the insert plate to allow for ease of future maintenance. Easily remove the fixture from the hardscape wall and re-insert it after service or cleaning.

IL200.640 • for use with 6" fixtures

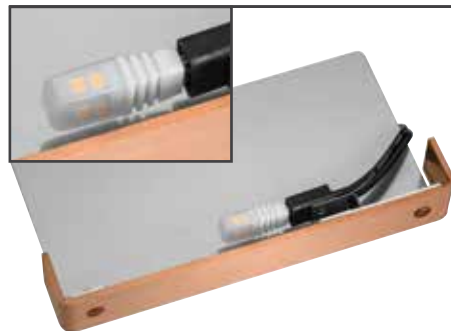
integrator



Our Integrator is a pre-installation stainless steel plate designed for mortar construction. Fixtures insert easily after the mortared cap is installed, and can be removed for future service or cleaning. Includes Tapcon fasteners and conduit.

IL200.652 • for use with 4" fixtures
 IL200.650 • for use with 6" fixtures
 IL200.651 • for use with 18" fixtures

led replacement lamps



A replaceable 1 watt LED lamp is available for your IL6.xxx Xenon fixtures. This LED easily inserts into the existing wedge base socket and has an approximate output of 10 watts in a 360 degree light distribution.

IL200.185 • LED lamp in 2700K warm white • 5 lamps per pack

transformers



12v AC Resin Transformers

IL200.515 • Electronic LED Transformer • 60 watts • interval timer • photocell
 IL200.500 • Magnetic Transformer • 60 watts • interval timer • photocell
 IL200.552 • Magnetic Transformer • 150 watts • interval timer • photocell

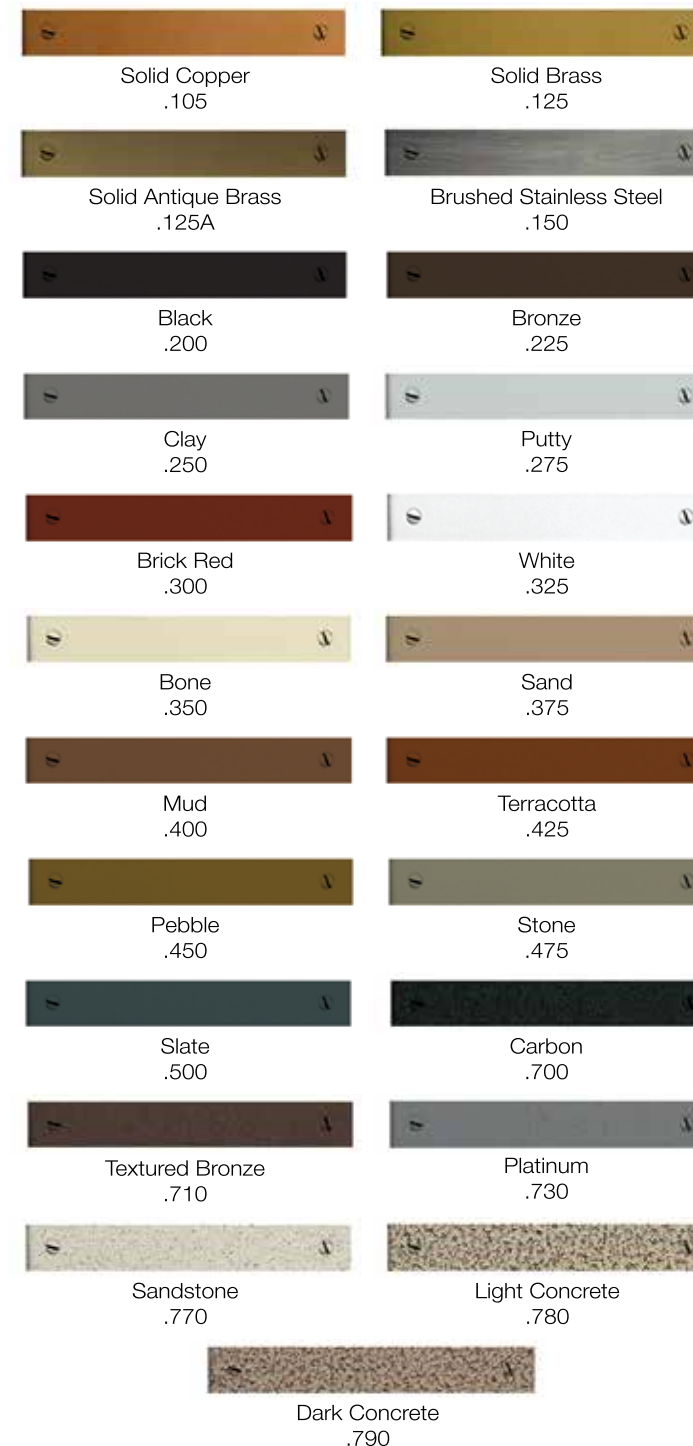
12v AC Stainless Steel Transformers

IL200.560 • Magnetic Transformer • 75 watts • multi-tap 12/13/14/15 volts
 IL200.561 • Magnetic Transformer • 150 watts • multi-tap 12/13/14/15 volts
 IL200.563 • Magnetic Transformer • 300 watts • multi-tap 12/13/14/15 volts
 IL200.565 • Optional plug-in timer
 IL200.566 • Optional plug-in photocell

customization

metals and finishes

If you're having a difficult time deciding on the perfect finish for your project, visit integral-lighting.com or call 800.861.1364 for a free color sample. An additional 90 custom RAL finishes can be viewed online.



led color outputs

Our overmolded LED fixtures are available in four popular color outputs to fit your project needs or match existing outdoor lighting.



2400K ultrawarm white
(similar to candlelight)



2700K warm white
(similar to incandescent)



3000K pure white
(similar to halogen)



4200K cool white
(similar to fluorescent)

technical details

what you need to know about low voltage lighting

Spacing

Start by determining your desired placement. We recommend 6' to 8' spacing between fixtures on a typical wall installation, depending on the type of atmosphere you want to create. For areas that need to be well-lit, such as steps or for security reasons, consider spacing your fixtures closer together or using a higher wattage lamp. For ambiance or accent lighting, consider spacing your fixtures further apart or using a lower wattage lamp.

Transformers

Low voltage lighting utilizes a transformer plugged into a standard outlet to convert primary house voltage (120 volts) to low voltage (12 volts AC or DC). Magnetic transformers are not voltage regulators. They do not restrict electric and deliver a constant 12 volts. Magnetic transformers reduce standard house voltage at an approximate ratio of 10 to 1. Consider, house current at 128 volts... your transformer reduces the power to 12.8 volts. In the case of a home powered by 120 volts, the result is 12.0 volts. When using a multi-tap transformer, utilize the 12 volt tap. Your LED installation may benefit from our Electronic LED Transformer, which automatically adjusts for the load and delivers 12 volts AC consistently. Voltage consistency is key to long life expectancy in both incandescent and LED lamps.

Sizing a Transformer

Add the total wattage of the lamps you are using. This determines the output required. When sizing a transformer for an LED installation, use the wattage consumed, not the output or brightness equivalent.

Cable

Low voltage cable connects the transformer to the lighting fixtures. As a general rule, use a minimum gauge of 12/2 when your total run of cable is within 100' of the transformer. Low voltage cable is designed for shallow burial directly in the soil only six inches deep. Low voltage cable has UV inhibitors in the jacket making it sunlight resistant.

Parallel Run

This type of run is recommended as it allows all fixtures to draw current independently of the other fixtures. Refer to the lighting diagram above.

Splices

The wire from the transformer needs to connect to the wires from the fixtures. Waterproof splices are required for proper LED function and life. Since landscape and hardscape lighting cables are buried underground, implementing the correct waterproof splice is important. Do not use insulation displacement or pierce point connectors as moisture will enter the cable, which will corrode and cause electrical resistance, ultimately compromising your system.

recommendations for controls based on the type of transformer you have installed.

Mortar Applications

For ease of installation in 1/2" mortar beds or veneer stone walls, pre-install our stainless steel Integrator. It is mounted with the supplied fasteners prior to the installation of the capstone and has flexible conduit attached for an easy connection behind the wall. The fixture inserts easily after the mortared cap is installed and can be removed in the future for service or cleaning.



Use a Voltmeter

Testing and reading the voltage is an essential step for low voltage lighting systems. The voltage should be 12 volts or less at the first fixture to ensure the lamps or LEDs function for their rated life. LED and lamp life expectancy are directly related to the voltage supplied to the fixture. Excessive voltage generates excess temperature and will shorten the life of your fixture. Excessive voltage by as little as 1/4 volt will reduce lamp life by 40%. For accurate voltage readings, use an analog voltmeter to test electronic transformers and a digital voltmeter to test magnetic transformers.

Dimming

All Integral Lighting fixtures are fully dimmable. Visit integral-lighting.com/faq to learn more about low voltage dimming and

UL Certified

Underwriters Laboratories has set forth the Standards for Safety in Landscape Lighting through the UL 1838 Standard. Our facility and product are inspected quarterly to ensure that you are supplied with consistency according to UL 1838 Low Voltage Landscape Lighting Systems.

Safety

As a safety precaution, always turn your power off and make sure the fixture has cooled before performing any maintenance, including cleaning, servicing or replacing lamps.

For additional design, technical or installation advice, please contact us. Call: 800.861.1364 Email: info@integral-lighting.com

overmolded led fixtures

MODEL NO.	LENGTH	HEIGHT	DEPTH	LIGHT SOURCE	VOLTAGE	ENERGY CONSUMPTION	BRIGHTNESS COMMON FACTOR	LUMEN	COLOR APPEARANCE OPTIONS	ESTIMATED LIFE	DIMMABLE	UL LISTED	IP RATING	MADE IN THE USA	FIND ON PAGE
IL4.xxx.500	4"	.5"	3"	LED	12vAC	1 watt	5 watts	60	2700K 3000K 4200K	40,000 hours	Yes	Yes	IP68	Yes	20
IL6.xxx.500	6"	.5"	3"	LED	12vAC	2 watts	10 watts	120	2700K 3000K 4200K	40,000 hours	Yes	Yes	IP68	Yes	22
IL600.xxx.500	6"	.5"	3"	LED	12vAC	2 watts	10 watts	120	2700K 3000K 4200K	40,000 hours	Yes	Yes	IP68	Yes	24
IL600.xxx.550	6"	.5"	3"	LED	12vAC	.5 watt	8 watts	80	2400K	40,000 hours	Yes	Yes	IP68	Yes	24
IL6000.xxx.500	6"	.75"	3"	LED	12vAC	2 watts	10 watts	120	2700K 3000K 4200K	40,000 hours	Yes	Yes	IP68	Yes	16
IL600.150.500	6"	.5"	3"	LED	12vAC	2 watts	10 watts	120	2700K 3000K 4200K	40,000 hours	Yes	Yes	IP68	Yes	18
IL612.150.500	12"	.5"	3"	LED	12vAC	2 watts	10 watts	120	2700K 3000K 4200K	40,000 hours	Yes	Yes	IP68	Yes	18
IL618.150.500	18"	.5"	3"	LED	12vAC	4 watts	20 watts	240	2700K 3000K 4200K	40,000 hours	Yes	Yes	IP68	Yes	18
IL624.150.500	24"	.5"	3"	LED	12vAC	6 watts	30 watts	360	2700K 3000K 4200K	40,000 hours	Yes	Yes	IP68	Yes	18
IL18.xxx.500	18"	.5"	3"	LED	12vAC	4 watts	20 watts	240	2700K 3000K 4200K	40,000 hours	Yes	Yes	IP68	Yes	28

led lamp and xenon fixtures

MODEL NO.	LENGTH	HEIGHT	DEPTH	LIGHT SOURCE	VOLTAGE	ENERGY CONSUMPTION	BRIGHTNESS COMMON FACTOR	LUMEN	COLOR APPEARANCE OPTIONS	ESTIMATED LIFE	DIMMABLE	UL LISTED	MADE IN THE USA	FIND ON PAGE
IL6.xxx	6"	.875"	3"	Xenon Lamp	12vAC	11.5 watt	11.5 watts	120	2600K	10,000 hours	Yes	Yes	Yes	26
IL6.xxx.185	6"	.875"	3"	LED Lamp	12vAC	1 watt	10 watts	120	2700K	30,000 hours	Yes	Yes	Yes	26
IL18.xxx	18"	.875"	3"	Xenon Lamp	12vAC	23 watts	23 watts	240	2600K	10,000 hours	Yes	Yes	Yes	27
IL18.xxx.185	18"	.875"	3"	LED Lamp	12vAC	2 watts	20 watts	240	2700K	30,000 hours	Yes	Yes	Yes	27

pavelux® led paver inserts

MODEL NO.	LENGTH	HEIGHT	DEPTH	LIGHT SOURCE	VOLTAGE	ENERGY CONSUMPTION	COLOR APPEARANCE OPTIONS	ESTIMATED LIFE	DIMMABLE	UL LISTED	IP RATING	MADE IN THE USA	FIND ON PAGE
IP4.100.500	4"	2"	.75"	LED	12vAC	1 watt	3000K	40,000 hours	Yes	Yes	IP67	Yes	14
IP4.100.550	4"	2"	.75"	LED	12vAC	.25 watt	2400K	40,000 hours	Yes	Yes	IP67	Yes	14
IP6.100.500	6"	2"	.75"	LED	12vAC	2 watts	3000K	40,000 hours	Yes	Yes	IP67	Yes	14
IP6.100.550	6"	2"	.75"	LED	12vAC	.5 watt	2400K	40,000 hours	Yes	Yes	IP67	Yes	14
IP8.100.500	8"	2"	.75"	LED	12vAC	2 watts	3000K	40,000 hours	Yes	Yes	IP67	Yes	14
IP8.100.550	8"	2"	.75"	LED	12vAC	.5 watt	2400K	40,000 hours	Yes	Yes	IP67	Yes	14



American Made.
We have it.
Because we make it.

51 North Elm Street Wernersville, PA 19565
Phone: 800.861.1364 Fax: 800.388.2898
info@integral-lighting.com integral-lighting.com

We reserve the right to incorporate changes and innovations which do not affect the performance of our products. Integral Lighting and Pavelux are registered trademarks of Hartman Design, Inc. Patents integral-lighting.com/patents. Other patents pending. Copyright 2021 Hartman Design, Inc.

